



Handling Emergencies Members and Parents Review

**Christ' Church
Christian Education Ministries
October 2011**



First Aid

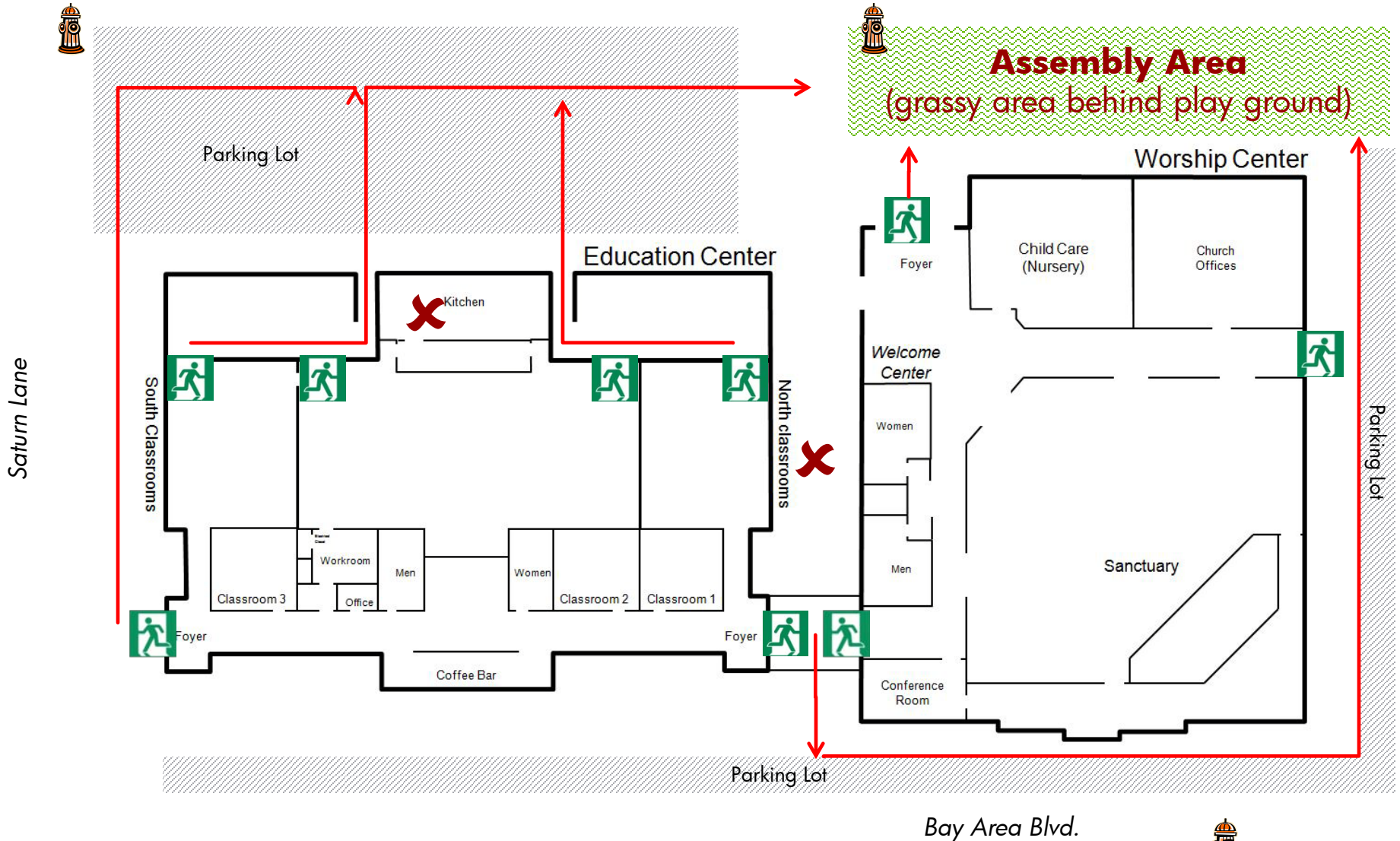
- Accidents and Emergencies
 - Teachers have been instructed to:
 - Call 9-1-1 for life threatening emergencies and contact department head and find parents of the child
 - It is ok to treat minor injuries, and to take advantage of our members who are medical professionals
 - Always tell the parent about any injury no matter how small
 - An *Incident Report* for serious incidents is to be filed with the church office
 - Parents should know:
 - Help stop spreading infections to your friends children – don't bring a child if they have not been fever-free for 24 hours
 - Teachers may inquire of you about injuries or sicknesses that children come to church with and can refuse admittance to children with infectious sicknesses
 - Teachers do not administer medications in class
 - By law teachers must report signs of child abuse

Evacuations

- Know your class's first best exit and an alternate escape route
- Listen to the instructions of the ushers
- Do not go to other classes! Go immediately to the assembly area!
- **Claim your child at the assembly area**
 - Don't endanger others by delaying the exit of classes from the building
 - Teachers have been instructed in evacuation procedures and will keep the classes together at the assembly area for you to find them
- Common Sense
 - Walk – don't run – Do not go back for your stuff
 - Stay off of parking lots, streets, and areas where emergency personnel need to work
 - Be aware of surroundings and crowds that may gather to watch and keep your children with you until you can as a family safely leave the church property



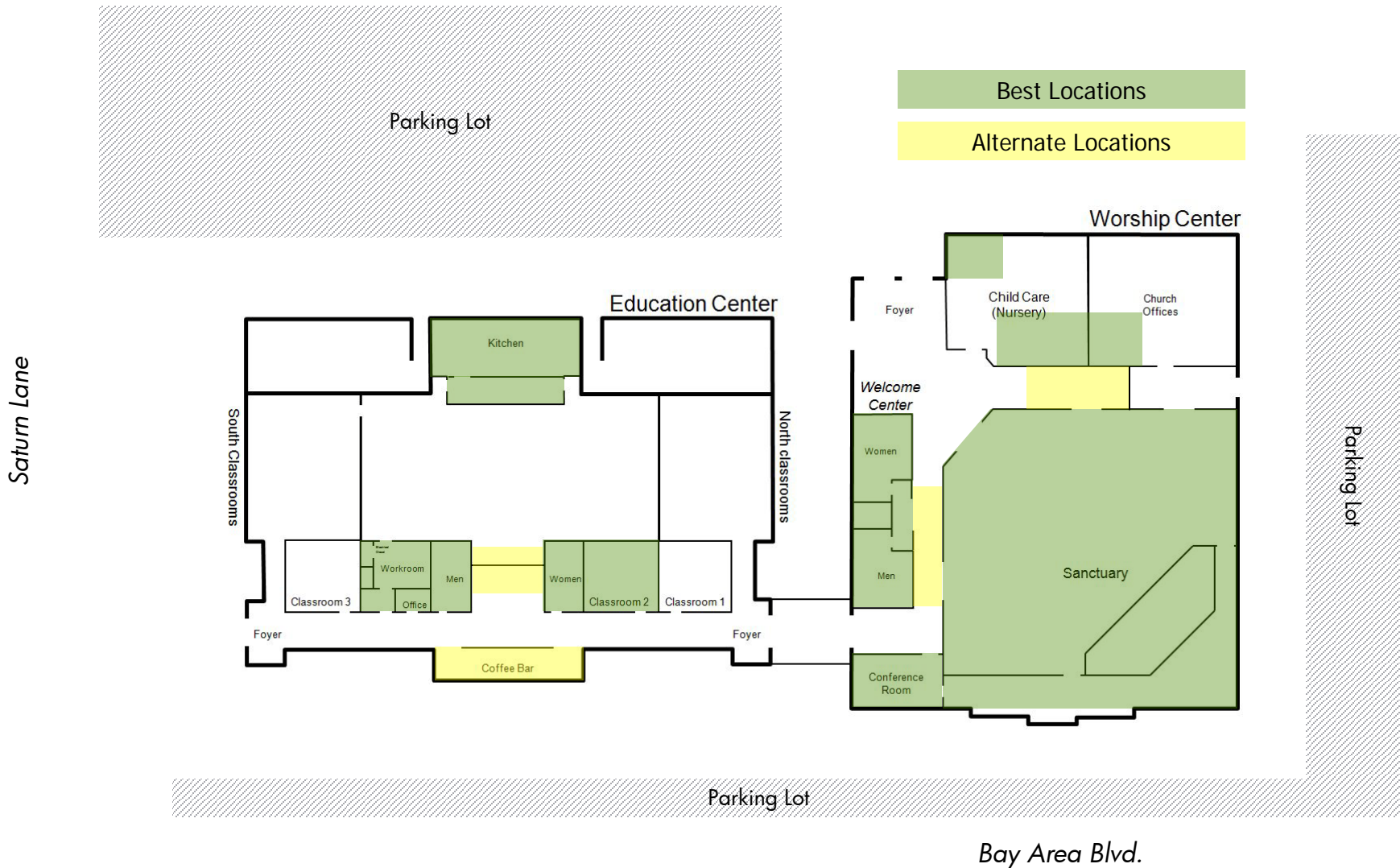
Emergency Exit Locations



Shelter-in-Place

- Shelter-in-Place is a protective action taken inside the building to protect you from external hazards, minimize your chance of injury and/or provide the time to allow preparations for a safe evacuation.
- Move to an interior space and get low - an office or corridor that is not part of the outside perimeter of the building. Especially away from windows.
- Do not change buildings –
 - teachers will protect your children and move them to the shelter locations
 - Changing buildings can be dangerous to you personally and can add danger to others
- Most likely scenarios
 - Severe weather (tornado, hail, etc.)
 - Accidental chemical release due to industrial/vehicle accident
- Least likely scenarios
 - Civil unrest
 - Biological, chemical or radiological attack

Shelter-in-Place Locations



Actions to take

- Educate the church membership on plans – leaders, teachers, children and adults
- Think about class plans and discuss with the class
- We will perform drills to practice for emergency